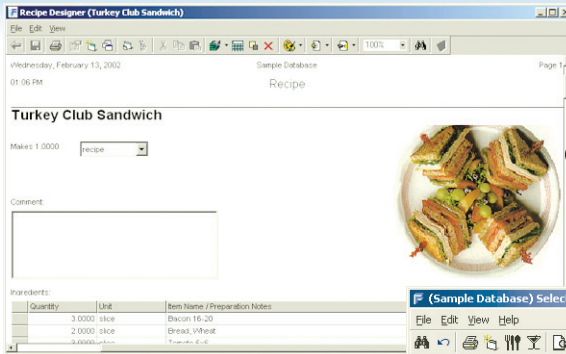




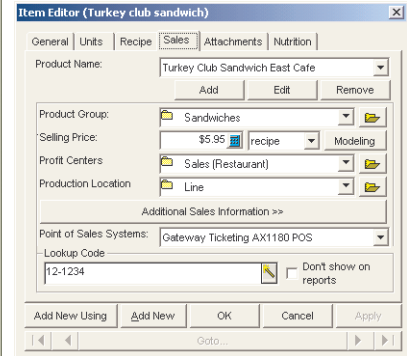
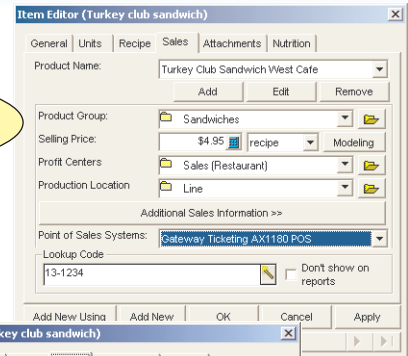
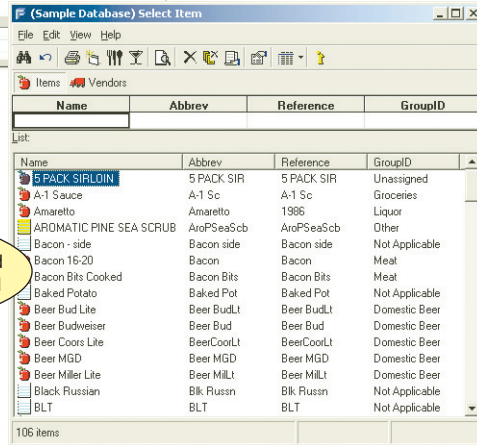
FOOD-TRAK® Food Service Inventory

Accurate, Efficient Food Service Management



View Usage of Items
Identify specific restaurants or snack booths that are having food and beverage usage problems.

Sophisticated Recipe Designer
Compile ingredients from your inventory to build a single item for consumption at a Galaxy Food Services Point of Sale station.



Galaxy Retail Point of Sale integrates with the FOOD-TRAK® System, a food and beverage inventory system tailored to optimize your profits. FOOD-TRAK® addresses vital areas of food service management, including inventory cost control, purchasing and receiving, product movement, recipes, management and menu engineering.

With Galaxy Point of Sale and FOOD-TRAK® you can:

- **Increase Accounting Accuracy and Decrease Data Entry Time**
Integration with financial accounting and event management systems increases efficiency and accuracy data entry and record-keeping.
- **Design Your Own Recipes**
Compile ingredients from your inventory to build a single item for consumption at a Galaxy Food Services Point of Sale station.
- **View Item Usage**
Identify specific restaurants or snack booths that are experiencing food and beverage usage challenges.

Complete and Accurate Inventory Tracking

- Automated order forecasting and purchase order generation
- Compile ingredients from inventory to build a single item for consumption
- Browser interface for Web-enabled access

Streamlined Purchase Order Processing

- Exchange data with the vendor's online order systems
- Automatically distribute data to general ledger accounts
- Price monitor reporting
- Notify operators of time-sensitive tasks such as purchase orders and requisitions

In-depth Sales and Inventory Analysis

- Analyzes margins and sales for optimized revenue performance
- Comparative and aggregated data in a multitude of reports
- Data can be gathered from FOOD-TRAK®, Galaxy, and accounting systems

Multi-venue Support

- Manage multiple locations, venues, and users
- Enterprise-wide, multi-property reporting
- Solid security across locations