



Manager's Workstation

Centralized Control of Your Daily Operations

Name	Node	Operator	Status	Approved	Shift
Ticketing 1	1	Jonathan Haigh	Logged On		1
Ticketing 2	2	Debra Jasper	Logged On		1
Ticketing 3	3	Allen Moreno	Logged On		1
Ticketing 4	4	Amy McGinn	Logged On		1
Groups 1	10	Juan Diaz	Logged On		1
Groups 2	11	Mark Smythers	Logged On		1
Groups 3	12	Matthew Right	Logged On		1
Pass 1	14	Ruth Tate	Logged On		1
Pass 2	15	Sarah Hills	Logged On		1
Kiosk 1	101	Public Kiosk	Logged On		1
Kiosk 2	102	Public Kiosk	Logged On		1
Kiosk 3	103	Public Kiosk	Logged On		1

Real-time User Status and Shift Control
View the status of Galaxy Point of Sale stations. Approve user login and cashout to maintain control of your shifts.

ACP	Node	Operator	Status	Admits	ACP Mode
Ticketing 1	1	Debra Jasper	Logged On	25	Entry
Ticketing 2	2	Carrie Arwood	Logged On	36	Entry
Ticketing 3	3	Amy McGinn	Logged On	14	Entry
Ticketing 4	4	Allen Moreno	Logged On	23	Entry
Groups 1	10	Heidi Pettersen	Logged On	536	Entry
Groups 2	11	Mark Smythers	Logged On	250	Entry
Turnstile 1	51	Jonathan Haigh	Logged On	987	Entry
Turnstile 2	52	Jonathan Haigh	Logged On	825	Entry
Turnstile 3	53		Closed		Exit
Turnstile 4	54		Closed		Exit
Handheld 1	31	Andree Gibbs	Logged On	15	
Handheld 2	31	Bob Stents	Logged On	30	
Handheld 3	31	Hannah McDermitt	Logged On	10	
Handheld 4	31	Jasmine Hope	Logged On	45	

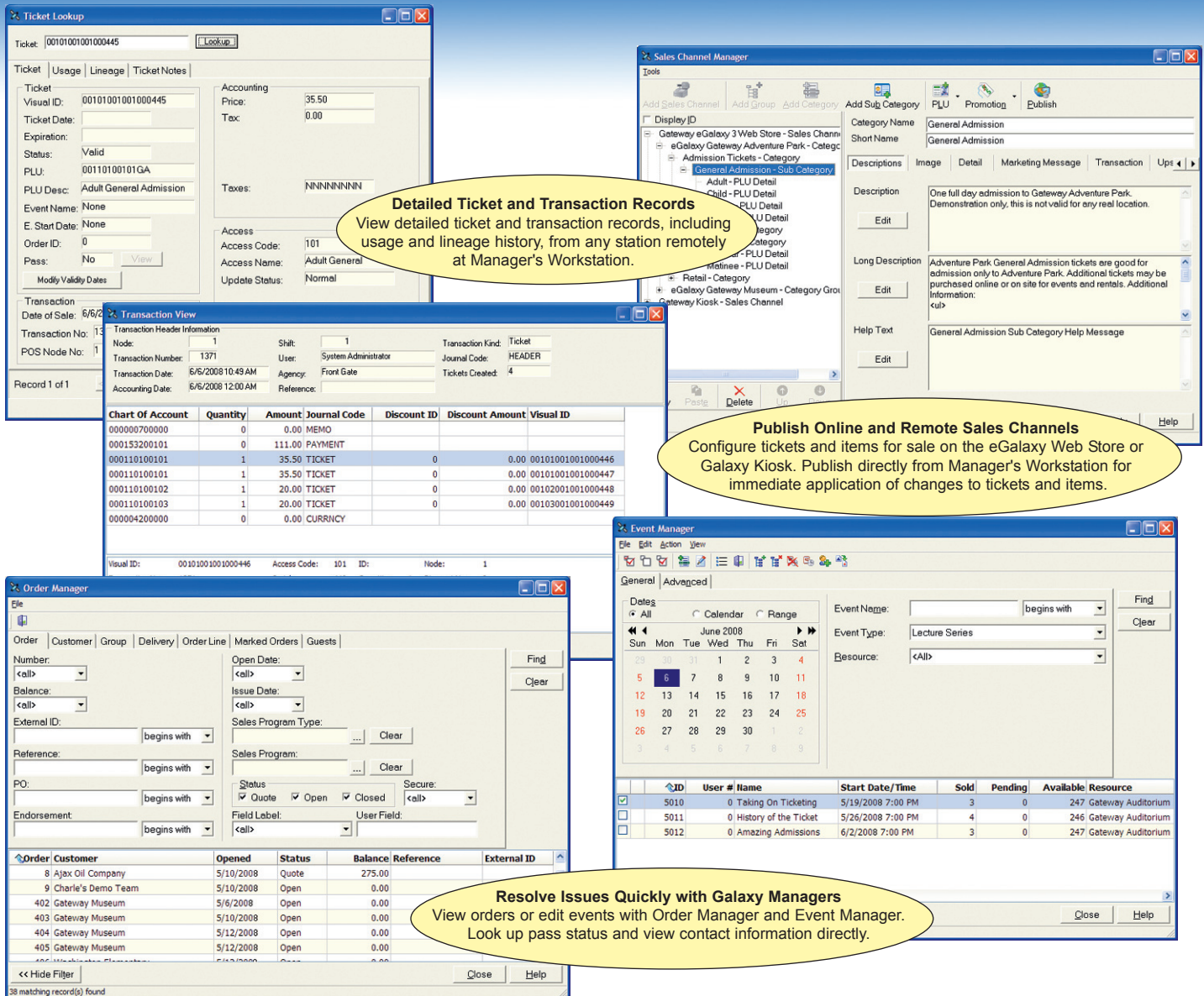
Remotely Control Turnstiles
Close turnstiles or change operating status from Entry to Exit. Set valid operations to admit tickets for special events or in pass holder or group areas of your facility.

Galaxy Manager's Workstation enables supervisors and administrators to perform key functions from a central location. Manager's Workstation integrates with Galaxy products such as Galaxy Point of Sale and Admission Control System for maintaining shift records and controlling turnstile operations and paging. In addition, managers have access to detailed information regarding orders, pass holders, and capacity-managed events.

With Galaxy Manager's Workstation you can:

- **Manage Real-time User Status and Shifts**
View the status of your Galaxy Point of Sale stations. Approve user login and cash-out to maintain control of your shifts.
- **Control Turnstiles Remotely**
Close turnstiles or change operating status from Entry to Exit. Set valid operations to admit tickets for special events or in pass holder or group areas of your facility.
- **View Detailed Ticket and Transaction Records**
Access detailed ticket and transaction records remotely from any station at Manager's Workstation. Ticket records include usage and lineage history.
- **Configure Online and Remote Sales Channels**
Configure tickets and items for sale on the eGalaxy Web Store or Galaxy Kiosk. Publish directly from Manager's Workstation for immediate distribution of changes to tickets and items.
- **Resolve Issues Quickly**
View orders or edit events with Order Manager and Event Manager. Look up pass status and view contact information directly from Manager's Workstation.





Detailed Ticket and Transaction Records
View detailed ticket and transaction records, including usage and lineage history, from any station remotely at Manager's Workstation.

Publish Online and Remote Sales Channels
Configure tickets and items for sale on the eGalaxy Web Store or Galaxy Kiosk. Publish directly from Manager's Workstation for immediate application of changes to tickets and items.

Resolve Issues Quickly with Galaxy Managers
View orders or edit events with Order Manager and Event Manager. Look up pass status and view contact information directly.

Monitor and Control Point of Sale Station Activity

- View user login information
- Maintain a centralized user database with password expiration and history controls
- Search a comprehensive journal by user, date, shift, node, and more
- Trigger the opening of sales windows for users to log on
- Control seller cash-out
- Limit and group stations being controlled by a single Manager's Workstation
- Send messages to sellers with urgent prompting capabilities

Manage Admission Control Stations

- Lock out stolen tickets
- Manage the mode of operations
- Set multiple turnstiles from entry to exit mode
- Release all turnstiles to free the exit for emergencies

eGalaxy Web Store and Galaxy Kiosk Publishing

- Create categories and sub-categories of tickets and items offered on your Web site or Kiosk
- Define images to be displayed with items
- Control names and long descriptions of each ticket and item
- Configure promotional offers and validated discounts

Integrated Galaxy Managers

- Use Order Manager to search and view orders
- Edit and control resource-managed events with Event Manager
- Search through existing passes to retrieve usage and sales history with Pass Lookup
- Back office access to each Galaxy module and sales channel